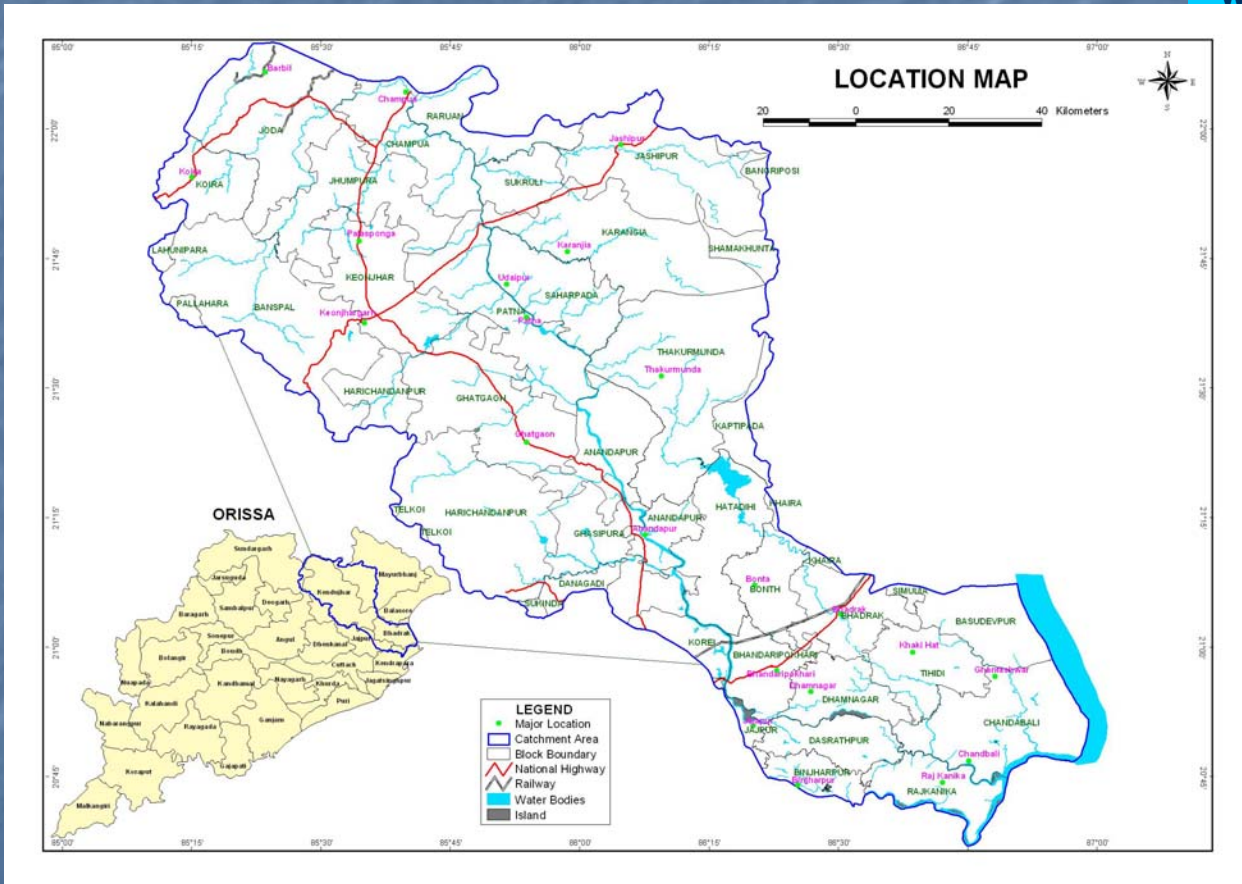


# Looking Ahead

[www.baitarani.org](http://www.baitarani.org)



Consolidation of Basin Information  
Management and Piloting of Basin  
Resources Planning and Management  
Options at Micro-Sites in the Baitarani  
River Basin, Orissa

# Objectives

[www.baitarani.org](http://www.baitarani.org)

- To consolidate the basin information management process and development basin decision support tools
- To take up comprehensive hierarchical and sectoral basin stakeholder dialogue across the basin in a collaborative framework and to identify key-stakeholders
- To create and/or augment human and institutional resources for IFBRM
- To pilot institutional and technical options of IFBRM in the basin across logical zones to augment livelihood and basin eco-health

# Consolidating basin information management process and developing basin decision support tools

<p>Further collection of basin information around four thematic areas and cross-thematic overlap</p>	<p>For filling up the gaps in information collection, compilation and analysis of the 1<sup>st</sup> phase                  To give a broad-base to the information data-base                  To develop a comprehensive basin level database                  To act as a repository of information on Baitarani Basin as well as on IFBRM</p>	<p>Focus will be on collection of more primary information through selection of sites by purposive random sampling based on available and emerging information                  More focus on cross-thematic or inter-disciplinary issues                  Methods: Participatory tools, Basin-LEAP, FGD, Questionnaire survey. RHEA</p>
<p>Development and analysis of spatial information/maps of the basin and lower order catchments through use of GIS</p>	<p>For analysis of spatial information and trends from satellite imageries                  To develop decision support maps with super-imposition of multiple layers of information</p>	<p>Use of Satellite imageries from different sources for different years                  Use of GIS tools and other computer models to analyze and generate useful spatial information</p>
<p>Development of maps, fact sheets and logical decision support models for facilitating IFBRM by different stakeholders</p>	<p>To enable easy comprehending and interpretation of basin situations, resources and issues by different group of stakeholders                  To support better and informed decision making towards appropriate and sustainable basin resources management</p>	<p>Use of GIS tools and software                  Statistical analysis, development of indicators, graphs, tables                  Logical arrangement of these information to develop decision support fact sheets and documents</p>

# Comprehensive hierarchical and sectoral basin stakeholder dialogue across the basin in a collaborative framework

[www.baitarani.org](http://www.baitarani.org)

To enable multi-stakeholders in the basin to learn about basin situation, information and resources  
To collect, rationalize and mainstream their opinion and perceptions about basin resources management  
To get them involved in basin management plan development  
To identify key basin-stakeholders for future basin institution

Series of stakeholder consultation across hierarchy and sector culminating to repetitive basin level dialogues  
Sharing of information by BRBI/ NIC/NGO team and soliciting stakeholder opinion and perceptions at different level  
Taking up basin-stakeholder analysis and Identification of key stakeholders

# Creating and/or augmenting human and institutional resources for IFBRM

<p>Supporting Internships (100) and Fellowships (20) on IFBRM disciplines and cross-disciplines to compliment IFBRM process</p>	<p>To stimulate professional interest and peer participation in this emerging development discipline                  To develop future professionals for effective IFBRM across developmental domain for future                  To carry out in-depth analysis and generation of sectoral and inter-disciplinary information in form of working or research papers for better comprehension of basin situations and to aid planning                  To ensure higher acceptance of process with greater involvement of individuals and institutions</p>	<p>Providing short-term internship opportunities to graduate and post-graduate students of Agricultural, Technological, Environmental and management institutions                  Offering of fellowships to senior researchers, statesman, mid-career professionals in different spheres of life to contribute to basin management discipline through sectoral and inter-disciplinary studies.                  In both the cases, BRBI will provide platform and facilitate these involvements</p>
<p>Collaborating with research institutions (3) in public and private sectors to jointly work on critical basin issues</p>	<p>To stimulate institutional interest and to address evolving of institutional resources for IFBRM</p>	<p>Institutes and BRBI will enter into formal collaboration with mutual sharing of financial and institutional resources to take up specific action research studies at different basin sites in collaboration with partner NGOs/industry/communities</p>
<p>Piloting of PhD programs (3) around IFBRM</p>	<p>To generate more in-depth and analytical basin information in the BRB about key/important basin issues and thereby to help in future planning initiative                  To nurture basin professionals for future                  To further interest of institutions and individuals in basin research</p>	<p>Screening of students registering for Ph D through reputed institutes and providing them financial and physical resources at BRBI to carry out their research on key basin issues</p>

# Piloting institutional and technical options of IFBRM in the basin across logical zones to augment livelihood and basin eco-health

[www.baitarani.org](http://www.baitarani.org)

<p>Piloting natural resources governance and management initiatives across zones at village level</p>	<p>Developing zone and resource specific technical and institutional options for IFBRM and their participatory implementation and monitoring for exploring wider replication To blend macro-concerns of basin level with micro-problem solving at local level To provide options to balance area based development approach like watershed etc.</p>	<p>Screening of 6 zones in the basin and stratified purposive sampling of 5 villages in each zone through indicator based screening Collaborative and participatory resource management planning and implementation with partnership with local NGOs, PRIs, Govt Agencies and Research Institutions Implementation would be around water resources and dependent land-uses with marketing facilitation through technical and institutional facilitation</p>
<p>Piloting GIS-enabled cluster-village resource management planning and implementation in a collaborative and participatory framework</p>	<p>To blend technological robustness of top-bottom GIS-based plan with institutional resilience of bottom-up participatory planning To demonstrate the potential of development approach based on institutional partnerships To develop pilot models for wider replication towards IFBRM</p>	<p>Identification of 6 nos of mini-watershed of around 10,000 ha in different basin-zones through GIS tools Top-bottom planning with GIS, modeling and technology support and to blend that with community aspiration of bottom-up participatory planning. Development cluster level institutions and piloting some technological options through participatory and collaborative framework (involving research institution, NGO, PRI and Govt Deptt)</p>

Facilitating institutional/software options at different zones in the basin towards better ecosystem health by directly addressing issues of pollution with related stakeholders.

For exploring local solutions based on dialogue between polluter and affected  
To pilot institutional frame work for community-corporate-CBO (CCC) partnership to ensure resilient ecosystem health

Arranging dialogues between polluter and affected at six different zones in the basin based on criticality of issue and attitude of partners from analysis of secondary and primary information.  
Arranging of regular interactions between stakeholders to explore mutually agreeable solutions with focus on resilient ecosystem health

# Thematic Framework

Thanks

Suggestions